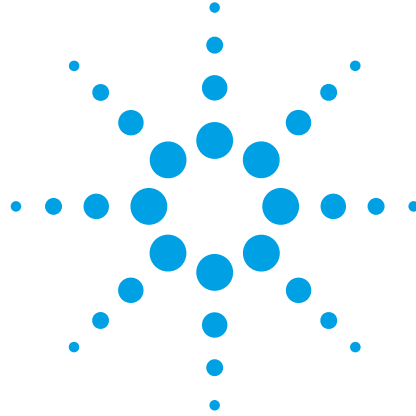


Agilent E7495B Base Station Test Set

Technical Overview



Comprehensive base station test:

- Wireless direct connect measurements
- Over-air test measurements
 - Backhaul measurements

Multiple wireless system testing:

- cdmaOne, CDMA2000 1X, and CDMA2000 1xEV-DO
- GSM, TDMA and analog systems
- W-CDMA (UMTS)



Agilent Technologies

One Rugged Tool Performs all Critical Base Station Tests

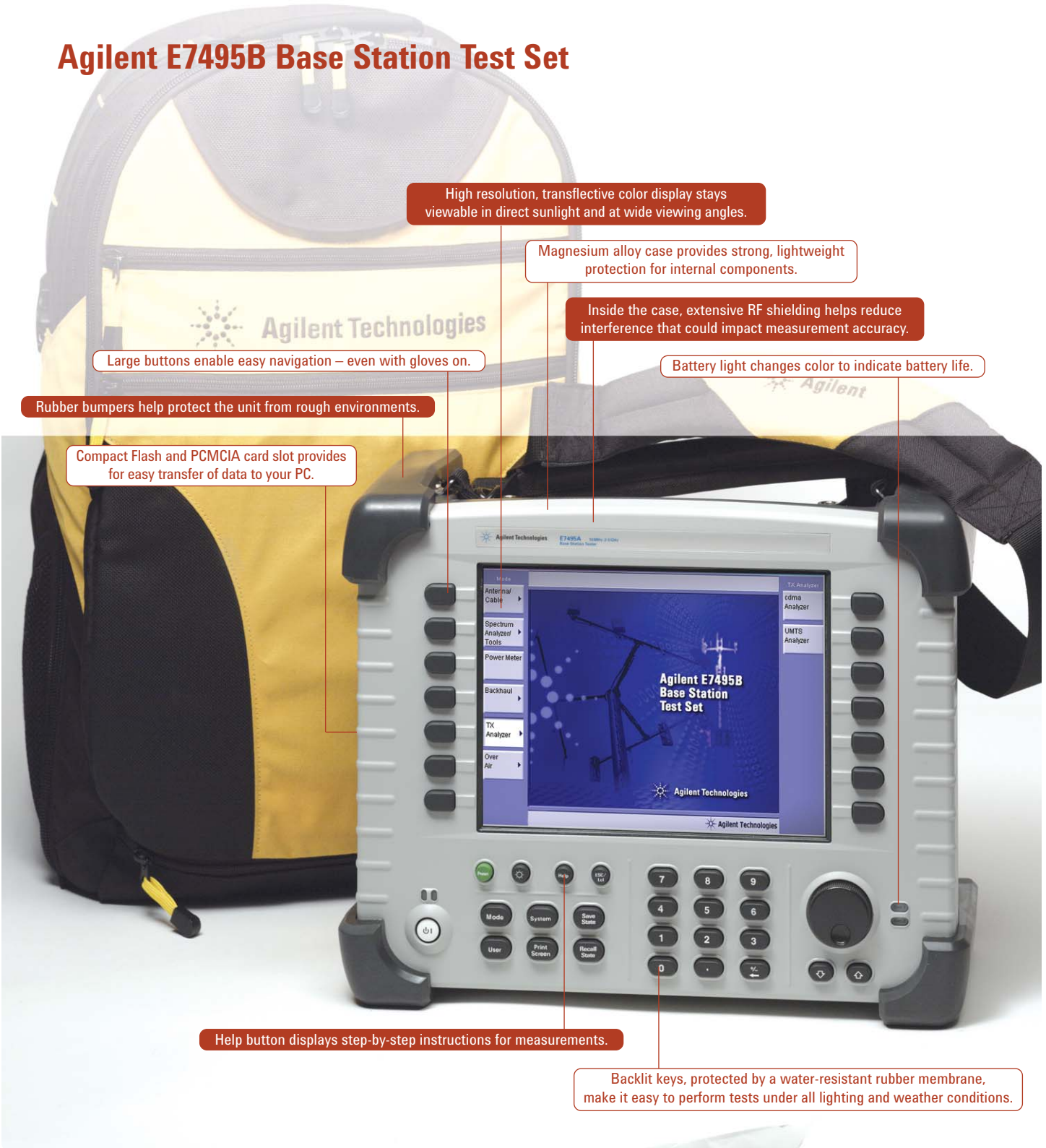


The Agilent base station test set is your single tool for everyday base station maintenance.

Technicians no longer need to carry armfuls of tools when they perform base station maintenance. All they need is one tool from Agilent Technologies. The Agilent E7495B base station test set:

- Performs all standard BTS and over-air measurements with the accuracy you need – more BTS wireless and wireline measurements than any other test set on the market.
- Minimizes the need for training because of its simple interface, simple procedures, and built-in measurement help.
- Increases each technician's productivity, decreasing time spent per cell site visit.
- Provides technicians with true spectrum analyzer performance for troubleshooting.
- Stands up to rough field use and all weather conditions.
- Costs much less than all the tools it replaces.

Agilent E7495B Base Station Test Set



High resolution, transfective color display stays viewable in direct sunlight and at wide viewing angles.

Magnesium alloy case provides strong, lightweight protection for internal components.

Inside the case, extensive RF shielding helps reduce interference that could impact measurement accuracy.

Battery light changes color to indicate battery life.

Large buttons enable easy navigation – even with gloves on.

Rubber bumpers help protect the unit from rough environments.

Compact Flash and PCMCIA card slot provides for easy transfer of data to your PC.

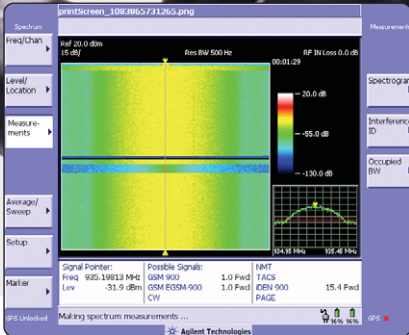
Help button displays step-by-step instructions for measurements.

Backlit keys, protected by a water-resistant rubber membrane, make it easy to perform tests under all lighting and weather conditions.

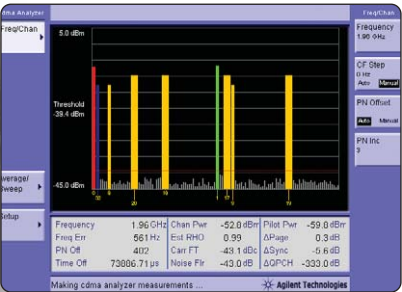
Comprehensive Base Station Test:

- ✓ Power meter
- ✓ CW, cdmaOne, CDMA2000 1X, and CDMA2000 1xEV-DO reverse link signal generator
- ✓ W-CDMA (UMTS), cdmaOne, CDMA2000 1X over-air test tool
- ✓ Antenna tester/cable fault analyzer
- ✓ Spectrum analyzer
- ✓ T1 or E1 tester
- ✓ TX RF tests for W-CDMA (UMTS), cdmaOne, CDMA2000 1X, CDMA2000 1xEV-DO, TDMA, GSM, EDGE, GPRS, AMPS, and iDEN
- ✓ TX RF modulation analyzer for W-CDMA (UMTS) and GSM, cdmaOne, CDMA2000 1X, and CDMA2000 1xEV-DO
- ✓ Internal GPS receiver

Now technicians will never have to worry, "Did I bring all the tools I need?" or have to deal with learning different user interfaces found in the various instruments.

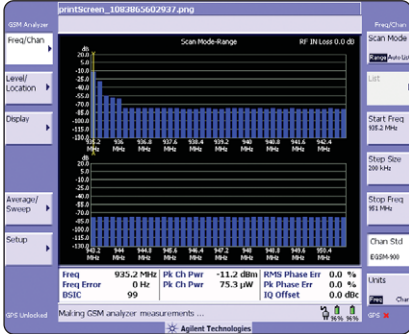


Interference analyzer



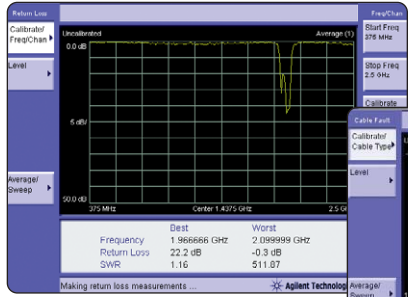
CDMA analyzer

With W-CDMA (UMTS)/CDMA over-air measurements, perform diagnostic tests without taking the base station off-the-air.

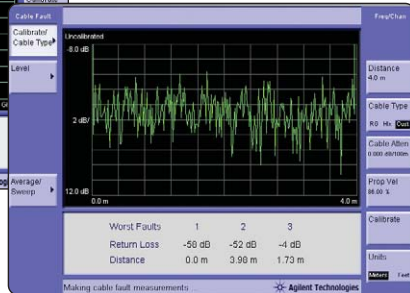


GSM analyzer

Leverage Your Technicians' Time, Improve Your Quality of Service



Return loss



Cable loss



Test/capability

Technician benefit

Subscriber benefit

<p>Power meter</p>	<p>Replaces the need to carry a separate power meter, simplifying maintenance and shortening site visits. Additionally, using an appropriate power sensor enables technicians to make power measurements of microwave links.</p>	<p>Accurate power settings help networks operate at full capacity – reducing coverage holes and minimizing the effects of interference.</p>
<p>CW, cdmaOne, CDMA2000 1X, and CDMA2000 1xEV-DO reverse link signal generator</p>	<p>Provides the technician with a source to conduct sensitivity measurements. Additionally, allows a technician to perform component level characterization utilizing simultaneous spectrum analysis and built-in RF and CDMA sources.</p>	<p>Reverse link testing helps to ensure network service quality.</p>
<p>W-CDMA (UMTS), cdmaOne, and CDMA2000 1X over-air test tool</p>	<p>Provides fast measurements in less than five minutes. Enables time for proactive maintenance and makes pole top testing practical.</p>	<p>Problem areas can be identified without interrupting service.</p>
<p>Antenna tester with vector network analysis capability</p> <ul style="list-style-type: none"> • cable tests • swept insertion loss • distance to fault • swept insertion gain 	<p>Lets your technicians evaluate one of the primary BTS trouble spots in a matter of minutes. Dual port insertion loss allows technicians to sweep various components like filters, duplexers, amps and more.</p>	<p>A healthy antenna and feed line network yields improved voice quality, better system reliability and reduced dropped calls.</p>
<p>Spectrum analyzer</p>	<p>Provides necessary functionality so your technicians don't need to carry a separate spectrum analyzer. Built-in masks and markers make it easy to use. Industry leading low noise figure receiver is capable of measuring down to -150 dBm, allowing technicians to identify and pull out low level, intermittent rogue interferers.</p>	<p>Quick interference detection leads to improved quality of service.</p>
<p>T1 or E1</p>	<p>Identifies and diagnoses T1 or E1 problems. Dual channel capability allows "loop-back" measurements.</p>	<p>Fewer wireline problems mean reduced service problems and down time.</p>
<p>Channel scanner for CDMA, W-CDMA (UMTS), cdmaOne, CDMA2000 1X, CDMA2000 1xEV-DO, TDMA, GSM, EDGE, GPRS, AMPS, and iDEN</p>	<p>Provides easy to interpret bar graph display illustrating channel power versus frequency of user defined channels.</p>	<p>The channel scanner quickly identifies improper power levels that can adversely affect network performance.</p>
<p>Internal GPS receiver</p>	<p>Provides position location, highly accurate frequency measurements and enables independent verification of base station GPS receiver timing.</p>	<p>For CDMA networks, the internal GPS receiver helps reduce dropped calls by identifying the "island cell" effect – improving the quality of service.</p>
<p>Interference analyzer</p>	<p>Allows engineers and technicians to find intermittent, interfering signals using a spectrogram display, signal strength meter and signal ID capability.</p>	<p>Eliminating interfering signals from the network improves quality of service.</p>

See Specification section for details.

Dramatically Increase Technician Productivity and Maintain High Quality of Service

The Agilent E7495B is the **most functional one-box tool** on the market, eliminating the need for your technicians to carry, manage and learn multiple test tools.

This helps reduce your asset costs, tracking costs, calibration and maintenance costs, and the training costs associated with learning the specifics of separate instruments.

The E7495B has a **remarkably short learning curve** because of its simple interface and accessible learning tools. So your engineers and technicians – even those with limited knowledge or experience – will be performing BTS measurements in less time. In turn, experienced engineers can devote more of their time resolving chronic coverage problems, planning new sites, and expanding into new services and technologies.

The simple procedures plus exceptionally usable hardware combine to produce **shorter net time per cell site visit**. Now each technician can handle more cell sites and have the time to conduct more proactive maintenance.

The field-rugged design means less downtime, more field time.

Engineered-in **extensibility** lets you do more today and tomorrow. Today, a variety of I/O ports permit data sharing with other tools and software. In the future, all feature upgrades will be done through hardware or firmware inside the case, preserving the single-case convenience and reliability.

Having the most frequently used BTS tools in one box dramatically increases your technicians' productivity.



Agilent Puts the Emphasis on Usability



Technicians can comfortably carry the test set, a laptop, cables and connectors with the optional backpack.

The Agilent base station test set is so easy to use, it minimizes the need for training. Technicians will get up to speed fast – and get their work done quickly every day.

The intuitive hardkey/softkey interface, used for all measurements, means there's less of a learning curve.

The built-in measurement help leads technicians through each measurement task step-by-step. Other learning tools include a user's guide and an optional web-based tutorial.

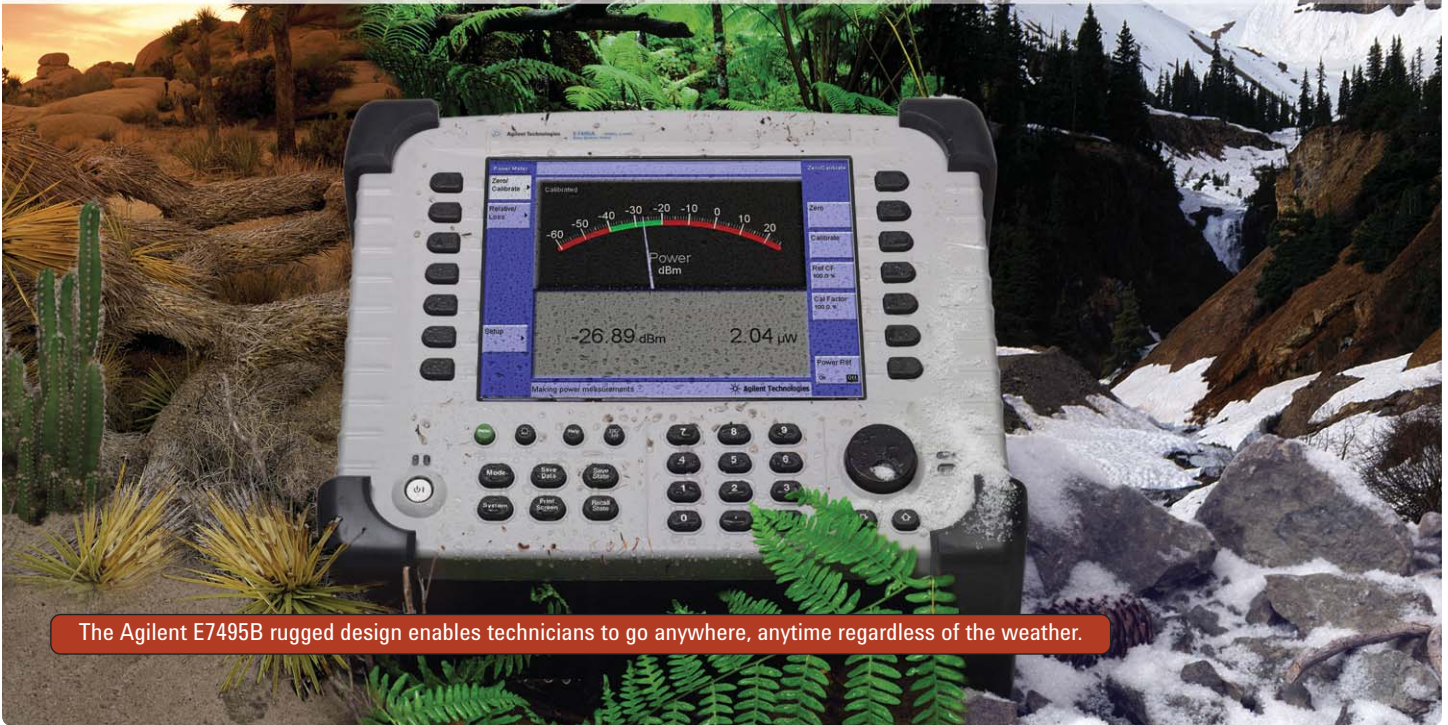
Backlit hardkeys, protected by a water-resistant rubber membrane, make it easy to perform tests under all lighting and weather conditions. A **transflective color display** stays viewable even in direct sunlight and at wide viewing angles. Result: faster, more accurate readings.

Technicians can hand-carry the unit with a soft carry case or use the ergonomically designed backpack to free up their hands. The backpack includes a comfort-contoured back panel, full padded hipbelt, plus extra pockets and tool loops for other hardware and supplies.

Snap-in battery packs provide up to three hours of performance. You can “hot swap” batteries in seconds.

Snap-in battery pack allows technicians to go to remote sites without the hassle of restrictive power cords.

Rugged, Durable, Weather Resistant — Agilent-Reliable



A **single-box measurement solution** makes sense only if it can stand up to rough field use and unexpected weather. So we designed the Agilent base station test set to be rugged, durable and weather resistant.

A magnesium alloy case with extensive internal RF shielding protects the components, reduces interference that could impact measurement accuracy, and makes the test set easy to handle and carry.

Gasketed ports, water-resistant rubber membrane, and dust-proof case design (no fan, no vents) add to the ongoing confidence you can have in the measurements. The soft carry case or backpack protects the unit on the way to and from the site.

We know that you'll want to add new capabilities as your network evolves. So we made sure that all functionality upgrades will be implemented through firmware or hardware inside the case. The Agilent test set grows in functionality without growing in size. The field-rugged design is never compromised by awkward external modules.

Features and Benefits Summary

Multiple tools

Power meter	<p>The built-in power meter replaces the need to carry a separate power meter, simplifying overall maintenance routines and shortening site visits. Additionally, using an appropriate power sensor enables technicians to make power measurements of microwave links. Accurate power settings help technicians maximize network capacity while reducing coverage holes and minimizing the effects of interference.</p>
W-CDMA (UMTS), cdmaOne, CDMA2000 1X, and CDMA2000 1xEV-DO over-air test tool	<p>Provides fast, qualified measurements in less than five minutes. Enables time for proactive maintenance and makes pole top testing practical. Problem areas can be identified without interrupting service.</p>
CW, cdmaOne, CDMA2000 1X, and CDMA2000 1xEV-DO reverse link signal generator	<p>Provides the technician with a source to conduct sensitivity measurements. Additionally, this option allows a technician to perform component level characterization utilizing simultaneous spectrum analysis and built-in RF and CDMA sources. Reverse link testing helps to ensure network Rx service quality.</p>
Antenna tester with vector network analysis capability <ul style="list-style-type: none"> • cable tests • distance to fault (DTF) • swept insertion loss • swept insertion gain 	<p>Lets technicians evaluate one of the primary BTS trouble spots in a matter of minutes. Dual port insertion loss allows technicians to sweep various components like filters, duplexers, amps and more. DTF resolution includes 256, 512, or 1024 data points, enough resolution to locate and isolate faults within a few centimeters (inches) of one another or resolve short jumper cables at the end of a long antenna feed line. A healthy antenna and feed line network yields improved voice quality, better system reliability and reduced dropped calls.</p>
T1 or E1	<p>Identifies and diagnoses T1 or E1 problems. Dual channel capability allows “loop-back” measurements. Fewer wireline problems mean reduced service problems and down time.</p>
Spectrum analyzer	<p>Provides necessary functionality so technicians don’t need to carry a separate spectrum analyzer. Built-in spectrum emissions masks, occupied BW, Spectrogram, and markers make it easy-to-use. Industry-leading low noise figure receiver is capable of measuring down to –150 dBm, allowing technicians to identify and pull out low level, intermittent rogue interferers. Quick interference detection leads to improved quality of service.</p>
Channel scanner for CDMA, W-CDMA (UMTS), cdmaOne, CDMA2000 1X, CDMA2000 1xEV-DO, TDMA, GSM/EDGE GPRS, AMPS, and iDEN	<p>Provides easy to interpret bar graph display illustrating channel power versus frequency of user defined channels. The channel scanner quickly identifies improper power levels that can adversely affect network performance.</p>
TX RF modulation analysis for W-CDMA (UMTS), cdmaOne, CDMA2000 1X, CDMA2000 1xEV-DO, and GSM	<p>TX modulation testing provides extensive transmitter analysis for various 2 to 3G formats like modulation quality (phase error, Rho, EVM), time offset, code domain power and display, channel power, etc. In addition, W-CDMA, and CDMA applications include Codogram analysis.</p>
Internal GPS receiver	<p>Provides position location, highly accurate frequency measurements and enables independent verification of base station GPS receiver timing. For CDMA networks, the internal GPS receivers help reduce dropped calls by identifying the “island cell” effect – improving the quality of service.</p>
Interference analysis <ul style="list-style-type: none"> • spectrogram display • level meter • modulation ID function 	<p>Allows engineers and technicians to find intermittent, interfering signals using a spectrogram display, signal strength meter and signal ID capability. Eliminating interfering signals from the network improves quality of service.</p>

See Specification section for more details.

Features and Benefits Summary *continued*

Ease-of-use

Transflective color display	Speeds up measurement readings because the display remains viewable in darkness, shade and direct sunlight.
Single hardkey user interface	Provides easy navigation to perform quick and accurate measurements – even with gloves on.
Backlit keys	Makes it easier to perform tests under all lighting and weather conditions.
Built-in measurement help	Provides step-by-step instructions for measurements.

Rugged design

Magnesium alloy case	Provides a lightweight yet strong enclosure; enhances heat distribution and RF shielding.
Water-resistant rubber membrane key pad and sealed display	Enables technicians to go anywhere, anytime – regardless of the weather. Seals out water and dirt to help ensure measurement performance.
Dust-free case design (no vents or fan)	Keeps the unit free of moisture and dirt.
Gasketed ports	Protects components from moisture and harsh weather.
Wide operating temperature range –10 to 50 °C/14 to 122 °F	Performs well even in extreme cold and hot conditions.
Internal RF shielding	Reduces RF interference that could impact measurement results.
Rubber bumpers	Protects the unit while in rugged field environments.

Extensible

Flexible architecture	Easily upgradeable to meet future network needs without growing in size.
Remote monitoring	Allows technicians to remotely monitor problematic base stations from the comfort of their own desk.
Upgradeable	Upgradeable as formats evolve.
Linux operating system	Provides a stable and efficient operation system.
Compact Flash and PCMCIA card slot LAN connection	Makes saving and transferring measurement results to your PC or network quick and easy. Enables data to be easily captured and transmitted to your network.
USB connectors and RS-232	Allows easy hook-up for data transfers and I/O applications like printers, keyboards and mice.
File export	Allows you to easily save data to Microsoft® Excel files and images to PNG files for use with a PC.

See Specification section for more details.

E7495B Base Station Test Set Specifications

Specifications describe the instrument's warranted performance and are valid over the entire operating/environmental range unless otherwise noted.

Supplemental characteristics are intended to provide additional information useful in applying the instrument by giving typical, but non-warranted performance parameters. These characteristics are shown in italics or labeled as "typical," "usable to," or "nominal."

General specifications

Unless otherwise noted the following specifications apply to all measurements/tools using **port 2**.

Frequency accuracy:

Using internal time base: $\leq \pm 1$ ppm with > 15 minute warm-up
 Internal time base aging: ± 1 ppm aging/year
 With GPS lock for: > 15 minutes: $\leq \pm 0.03$ ppm

Input frequency range:

10 MHz to 2700 MHz
Usable to 500 KHz (specifications and typical values do not apply below 375 MHz unless otherwise noted)

Maximum input level: +20 dBm (.1 W), +50 dBm w/supplied attenuator

Maximum input power without damaging instrument: 100 W (without external attenuator)

Frequency and time reference:

Can use internal timebase or external signal:

GPS (external antenna supplied)
 Even second; pulse

1 MHz	≥ 0 dBm
2.048 MHz	≥ 0 dBm
4.95 MHz	≥ 0 dBm
10.0000 MHz	≥ 0 dBm
13.0 MHz	≥ 0 dBm
15.0 MHz	≥ 0 dBm
19.6608 MHz	≥ 0 dBm

Display:

Scale: 1 to 20 dB/div. settable in 1 dB increments
 Number of points: 256
 Number of divisions: 10

40 dB attenuator:

Frequency range: 10 to 2500 MHz
 Attenuation accuracy: ± 0.5 dB
 Max power: 50 dBm (100 W)

Spectrum analyzer/tools

Input frequency range: 10 MHz to 2700 MHz (*usable to 500 KHz*)

Reference level range: -150 to +100 dBm

Dynamic range: +50 dBm to -150 dBm
 (with supplied 40 dB attenuator) (30 Hz RBW)

Input attenuation: 0 to 30 dB automatically selected,
 10 dB controllable manually

Amplitude accuracy: ± 1 dB (100 to 2500 MHz at 25 °C)

Adjacent channel power accuracy: ± 0.75 dBc

Resolution bandwidth: 10 Hz to 1 MHz, settable to 1 Hz precision

Span: 1 KHz to 2.6995 GHz

Trace update:

Span: 2.49 GHz = 5.1 sec
 60 MHz = 400 mS
 1 MHz, 100 Hz RBW 1.2 sec

Simultaneous dynamic range: > 90 dB (CW signals at 300 KHz separation, span 500 KHz, 30 Hz RBW)
 ≤ -85 dBc (30k Hz offset)

SSB phase noise:

Spurious responses:

Range control set to auto, high sensitivity mode
 Internally generated, 50 ohm load on input: < -115 dBm
 Crossing spurs: ≤ -50 dBc

Displayed average noise level: -150 dBm (30 Hz RBW, 375 MHz to 1.5 GHz)

Port 2 VSWR: < 2:1

Antenna/cable analyzer¹

Frequency range: 375 to 2500 MHz

Frequency resolution: < 500 Hz

Immunity to interfering signals: +20 dBm (with interference rejection turned on)

Measurement speed:

Full span: < 17 mS
 60 MHz span: < 7 mS

Return loss (port1)

With ≥ 16 averages: 375 to 2200 MHz
 Range: > 40 dB
 VSWR: < 1.02
 Resolution: 0.1 dB
 Display range: -5 to +150 dB
 SWR range: 1 to 500

Distance to fault (port1)

Range (m): 1 m to 300 m
 Resolution: $(1.5 \times 10^8) (Vf)/(f2-f1)$ Hz where Vf is relative propagation velocity of cable. (*typically 1% of measurement distance*)
 VSWR: 1 to 500
 Number of Data Points: 256, 512, 1024

Example table illustrating the effects of data points and span versus measured distance and resolution (Vf of 93.1%):

Data Points	Span	Measured distance	Resolution
256	140 MHz	127.68 m	50 cm (19.6 inch)
512	140 MHz	255.36 m	50 cm (19.6 inch)
512	280 MHz	127.68 m	25 cm (9.8 inch)
1024	560 MHz	127.68 m	12.5 cm (4.9 inch)

Insertion loss (port 1 to port 2)

Measurement uses supplied 10 dB pads
 Usable range: > 100 dB wide range mode
 Accuracy: ± 1 dB (*over 0 to 60 dB, ≥ 16 averages*)
 Average insertion loss (readout) accuracy:
 Range: 0 to 40 dB
 Frequency: 824 to 960 MHz, 1710 to 2170 MHz (mobile phone bands)
 Readout resolution: ± 0.1 dB

1. For antenna/cable measurements, a short self-calibration procedure must be run prior to making the measurement. For more information about the calibration procedures and when they are needed, see sections 2 and 3 in the users manual or use the online help.

Options

cdmaOne, CDMA2000 1X analyzer Option 200

Waveform quality (rho) accuracy: $\pm .005$ for $0.9 < p < 1.0$
(min power @ RF input > -85 dBc)

Pilot time alignment (tau): ± 500 nSec

Code domain power accuracy: ± 1.5 dB absolute, ± 0.5 dB relative (> -20 dB)
Pilot power: ± 1.5 dB

CDMA2000 1xEV-DO analyzer Option 205

Waveform quality (rho) accuracy: $\pm .008$ for $0.9 < p < 1.0$
(min power @ RF input > -70 dBc)

Frequency error: ± 20 Hz (with freq/time ref set to external even sec or GPS)

Pilot time alignment (tau): ± 500 nSec

Code domain power accuracy: ± 1.5 dB absolute, ± 0.5 dB relative (> -20 dB)
Pilot + MAC power: ± 1.5 dB

RF channel scanner Option 220

Measurement range: +20 to -125 dBm (up to +50 dBm with external attenuator > 375 MHz, 10 KHz RBW)

Frequency readout accuracy: Time base accuracy +3 Hz + 1/(measurement time X duty cycle)

RF channel power: ± 1 dB (100 to 2500 MHz)

GSM TX analyzer Option 230

RF channel power accuracy: ± 1 dB (0 to -70 dBm)

Phase error floor: $< 2.5^\circ$ RMS

Phase error accuracy: $< 1^\circ$ RMS, $2^\circ \leq$ phase error $\leq 15^\circ$

Frequency error accuracy: ± 40 Hz with external reference

W-CDMA (UMTS) TX analyzer Option 240

Error vector magnitude: Resolution 0.1
Conditions: Min power at RF input > -65 dBm, 3GPP test model 4

Code domain power accuracy: ± 0.5 dB for code channel power > -25 dB relative to total power using test model 1 (with 16 DPCH, 32 DPCH, and 64 DPCH) test model 2, and test model 3 (with 16 DPCH and 32 DCPH) 1 second (in auto mode)

Scrambling code:
Code domain power display update: 1.5 sec

DC bias Option 300

Frequency range: 375 to 2500 MHz
DC voltage: +12.7 VDC max
DC current: 800 mA max
Volt-amps: 9.84 VA max

Signal generator (CW) Option 500 (port 1)

Frequency range: 375 to 2500 MHz
Output level: -23 to -90 dBm
Level accuracy: ± 1 dB
Phase error: at 30 KHz offset -90 dBc/Hz

cdmaOne, CDMA2000 1X, CDMA2000 1xEV-DO (requires Option 205) reverse link signal generator Option 510 (port 1)

Frequency range: 375 to 2500 MHz
Output level: -28 to -95 dBm
Level accuracy: ± 0.7 dB (at 25 °C, -44 dBm to -95 dBm)
 ± 1 dB (at 25 °C, -28 dBm to -43 dBm)

Power meter Option 600

Display Range: -100 dBm to +100 dBm (range is power sensor dependent)
 ± 100 dBm (user settable)
Display limits: Settable 1.0, 0.1, 0.01, 0.001 in logarithmic mode, or 1, 2, 3, or 4 significant digits in linear mode
Resolution:

Accuracy

Instrumentation:
Absolute: ± 0.02 dB (log) or $\pm 0.5\%$ (linear). Add the corresponding power sensor linearity percentage.
Relative: ± 0.04 dB (log) or $\pm 1.0\%$ (linear). Add the corresponding power sensor linearity percentage.

Zero set:

Zero set is the digital zero with an 8482A sensor: ± 50 nW

Power reference:

Power output: 1.00 mW (0.0 dBm) traceable to the U.S. National Institute of Standards and Technology (NIST).
Accuracy: $\pm 1.2\%$ worst case ($\pm 0.9\%$ rss) for one year.
SWR: < 1.08

External attenuator

Max power: 100 W
Attenuation: 40 dB ± 0.5 dB¹

Power meter Option 600 with Agilent 8482A power sensor (also supports Agilent 8481A power sensor)

Frequency range: 100 KHz to 4.2 GHz

VSWR:
100 KHz to 0.3 MHz < 1.60
0.3 MHz to 1 MHz < 1.20
1 MHz to 2 GHz < 1.10
2 GHz to 4.2 GHz < 1.3

Power linearity: +10 dBm to +20 dBm; $\pm 3\%$
Maximum power: 300 mW average, 1 W peak, 30 W-us per pulse
Measurement noise: < 93.5 nW (0.85 + 110 nW)
Averaging filter: Fixed at 32 in normal mode
Zero drift: $< \pm 10$ nW

1. Attenuator can be characterized to within 0.1 dB in the mobile phone bands using the insertion loss measurement. This value can be stored for use with the power meter.

T1 analyzer Option 700

Features:

Receive level: (Line 1 and line 2) +6 dB DSC to -36 dB DSX or 100 mv p-to-p to 12 v p-to-p
 Receive frequency display receive frequency (5 ppm)(line 1 and line 2) "Loop-back" control send CSU or NIU loop codes CSU/NIU emulation respond to CSU or NIU loop codes

Electrical interface

Connectors, RX, TX: Primary and secondary ports
 Output: Conforms to TR-TSY-000499, CCITT Rec.G.703 AT&T Pubs CB113, CB119, CB132, CB143 PUB62508 and PUB62411 pulse shape specifications when terminated in 100 ohms and 0 dB line build-out is selected
 Line build-out: 0 dB, -7.5 dB, -15 dB

Input: Terminate: DSX +6 dB to DSX -36 dB, 100 ohms
 Monitor: DSX -14 dB to DSX -40 dB, 100 ohms
 Bridge: DSX +6 dB to DSX -36 dB, > 1000 ohms
 Clock: 1.544 MHz
 Internal: ± 5 ppm
 External: ± 300 ppm
 Recovered: ± 300 ppm

Transmitter and receiver

Framing: Unframed, D3/D4 & ESF
 Channel formats: Full T1, 64x1

Test patterns:

QRSS, all 0s, 1:7, 2 in 8, 3 in 24, all 1s, T-1-Daly, 55 OCTET
 Error injection Type: BPV, frame, CRC, pattern (logic)
 Error rate: Single
 Alarm inject Type: LOS, LOF, yellow, AIS, idle (CDI)

E1 analyzer Option 710

Features

Error detect: Code (BPV), FAS, MFAS, CRC-4, far end block (FEBE), pattern, frame slip
 Error rate calculation: Bit-error-rate, error free seconds, errored seconds
 Alarm detect: AIS, TS-16 AIS, FAST DISTANT, MFAS DISTANT
 Clock and frame slips: Clock slips, frame slips, peak wander, clock slip rate
 Auto configuration: Automatically detect line code, framing and test pattern

Receive level (line 1 and line 2): +6 dB DSX to -36 dB DSX or 100 mv p-to-p to 12 v p-to-p
 Receive frequency (line 1): Display receive frequency (± 5 ppm)
 Channel access: output audio to system
 Delay measurement: Measure delay in unit intervals for "looped-back" signal

Electrical interface

Connectors, RX, TX: Primary and secondary ports
 Output: Conforms to ITU-T Rec.G.703 AMI, HDB3
 Impedance: Terminate: 75 ohms ± 5% bridge: > 1000 ohms
 Input: Terminate: DSX +6 dB to DSX -36 dB
 Bridge: DSX +6 dB to DSX -36 dB

Clock: 2.048 MHz
 Internal: ± 5 ppm
 External: ± 300 ppm
 Recovered: ± 300 ppm

Transmitter and receiver

Framing: Unframed, PCM-30, PCM-30 with CRC, PCM-31, PCM-31 with CRC
 Channel formats: Full E1, 64x1

Test patterns:

(True or Inverse, ITU Rec) 2⁶-1 (Q6&Q5), 2⁹-1 (V.52), 2¹¹-1 (0.152), 2¹⁵-1 (0.151) 2²⁰-1 (V.57), QRSS, 2²³-1 (0.151), all 0's, 1:7, 1:3, 1:1, all 1's
 Error injection Type: Code (BPV), FAS, MFAS, CRC-4, far end block (FEBE), pattern
 Error rate: Single
 Alarm generation AIS, TS-16 AIS, FAS DISTANT, MFAS DISTANT, loss of signal, loss of frame

General

Display

Transflective VGA color LCD

Physical dimensions

Height: 11.6 in, 295 mm
Width: 14.5 in, 368 mm
Depth: 5.3 in, 135 mm
Weight (without batteries): 20 lbs, 9.1 kg

Power

Power supply
Internal: *Lithium ion battery: 10.8 volts, 6.0 Ah*
(1 NI2040AG shipped standard, will accept two batteries)
External DC input: +9 V to +25 V DC 4 amps
Battery life: *Approximately 1.5 per battery (time varies dependent upon instrument mode)*

Interface ports

Two RS 232 (DB-9) (reserved for future use)
Two USB 1.1 (reserved for future use)
One LAN port: 10 base T
Built-in speaker
PCMCIA card slot
Compact flash memory (type 1 & 2)
Stereo headphone jack
General purpose input/output: TTL level (reserved for future use)

Inputs

Port 2 RF in: 50 ohm, type N
External DC input: +9 V to +25 VDC 4 amps

Frequency reference:

Input power: *-10 to +10 dBm*
Connector: *50 ohm BNC*

Even second:

Connector: *High impedance BNC*
Level: *TTL compatible*

GPS antenna:

Connector: SMA
Output: 5 V at 50 mA

Outputs

Port 1 RF out/SWR:
Connector: *50 ohm, type N*
Power reference: *50 ohm type N; SWR < 1.06*

Optional connectors

Option 600 power meter
Outputs: Type N 50 ohm power reference
Inputs: Sensor input for 8480 series sensors
Option 700 T1 analyzer
Outputs: (2) Bantam outputs; TX primary and secondary
Inputs: (2) Bantam inputs; RX primary and secondary
Option 710 E1 analyzer
Outputs: (2) 75 ohm BNC outputs; TX primary and secondary
Inputs: (2) 75 ohm BNC inputs; RX primary and secondary

Operating temperature

Specified temperature range: *-10 to 50 °C; 14 to 122 °F*

Storage temperature

-40 to 70 °C; -40 to 158 °F

Calibration

Cycle: one year

Warranty

Duration: one year

Ordering information – E7495B base station test set

Standard test set functionality includes spectrum analysis and antenna measurements

Standard accessories include:

- PCMCIA 64 MB flash memory card
- AC/DC converter
- NI2040AG lithium ion battery
- GPS antenna
- 10 dB Coaxial attenuator (Q2)
- Coax 50 ohm terminated N-male
- Open/short M type N
- Adapter storage box
- Shoulder strap
- Documentation (CD ROM)A
- 2' M-N to M-N cables (Q2)
- 10' M-N to M-N cable
- N-female to N-female barrel
- Adapters

Ordering information – options

Note: Upgrade options for the E7495A/B use the designation E7495XU before the respective option number.

E7495B-200 cdmaOne and CDMA2000 1X TX analyzer
E7495B-205 CDMA2000 1xEV-DO analyzer (RX testing requires Option 510)
E7495B-210 cdmaOne, CDMA2000 1X over-the-air test (requires Option 200, recommend 810/811/812 or equivalent)
E7495B-220 Channel scanner
E7495B-230 GSM TX analyzer
E7495B-240 W-CDMA (UMTS) TX analyzer
E7495B-250 W-CDMA (UMTS) over-the-air test (requires Option 240, recommend 813 or equivalent)
E7495B-270 Interference analyzer
E7495B-300 DC Bias
E7495B-330 Nortel CDMA base station software (requires Option 200, 510, 600)
E7495B-500 CW signal generator
E7495B-510 CW, cdmaOne, CDMA2000 1X, CDMA2000 1xEV-DO (requires option 205) reverse link signal generator
E7495B-600 Power meter (requires 8481A or 8482A power sensors)
E7495B-700 T1 analyzer
E7495B-710 E1 analyzer
E7495B-800 40 dB 100 W attenuator, backpack, and E7495A/B measurement guide
E7495B-801 Soft carry case
E7495B-802 Backpack
E7495B-803 40 dB 100 W attenuator
E7495B-805 Paper manual
E7495B-810 Cellular antenna and pre-selector filter for Option 210
E7495B-811 PCS antenna and pre-selector filter for Option 210
E7495B-812 Korean PCS antenna and pre-selector filter (required for Option 210)
E7495B-813 Antenna and pre-selector filter (required for Option 250)
E7495B-820 Battery pack, external battery charger, DC car adapter
E7495B-840 Transit case
E7495B-51B Return to Agilent repair
E7495B-50C Return to Agilent calibration
8482A/8481A Power sensor

Additional Agilent Literature

Brochure

*Accelerate CDMA2000 Performance with Agilent's
Wireless Network Solutions*
literature number 5988-4423EN

CD

Agilent Base Station Test Set
literature number 5988-7189EN

Photo Card

Agilent E7495B Base Station Test Set
literature number 5988-5560EN

*Agilent E7495B Base Station Test Set: Option 205
1xEV-DO Analyzer,*
literature number 5989-2846EN

*Agilent E7495B Base Station Test Set: Option 250
W-CDMA (UMTS) Over-the-Air Test, Option 230
GSM Transmitter Analysis, Option 270
Interference Analysis*
literature number 5989-1171EN

Poster

Why are power measurements so important?
literature number 5988-7188EN

For More Information

For more information about Agilent's solutions for the communications industry, visit our Web site at www.agilent.com.

For more information about the Agilent E7495B Base Station Test Set, go to: www.agilent.com/find/E7495B

www.agilent.com

Agilent Technologies' Test and Measurement Support, Services, and Assistance

Agilent Technologies aims to maximize the value you receive, while minimizing your risk and problems. We strive to ensure that you get the test and measurement capabilities you paid for and obtain the support you need. Our extensive support resources and services can help you choose the right Agilent products for your applications and apply them successfully. Every instrument and system we sell has a global warranty. Two concepts underlie Agilent's overall support policy: "Our Promise" and "Your Advantage."

Our Promise

Our Promise means your Agilent test and measurement equipment will meet its advertised performance and functionality. When you are choosing new equipment, we will help you with product information, including realistic performance specifications and practical recommendations from experienced test engineers. When you receive your new Agilent equipment, we can help verify that it works properly and help with initial product operation.

Your Advantage

Your Advantage means that Agilent offers a wide range of additional expert test and measurement services, which you can purchase according to your unique technical and business needs. Solve problems efficiently and gain a competitive edge by contracting with us for calibration, extra-cost upgrades, out-of-warranty repairs, and onsite education and training, as well as design, system integration, project management, and other professional engineering services. Experienced Agilent engineers and technicians worldwide can help you maximize your productivity, optimize the return on investment of your Agilent instruments and systems, and obtain dependable measurement accuracy for the life of those products.



Agilent Open

www.agilent.com/find/open

Agilent Open simplifies the process of connecting and programming test systems to help engineers design, validate and manufacture electronic products. Agilent offers open connectivity for a broad range of system-ready instruments, open industry software, PC-standard I/O and global support, which are combined to more easily integrate test system development.

United States:

(tel) 800 829 4444
(fax) 800 829 4433

Canada:

(tel) 877 894 4414
(fax) 800 746 4866

China:

(tel) 800 810 0189
(fax) 800 820 2816

Europe:

(tel) 31 20 547 2111

Japan:

(tel) (81) 426 56 7832
(fax) (81) 426 56 7840

Korea:

(tel) (080) 769 0800
(fax) (080) 769 0900

Latin America:

(tel) (305) 269 7500

Taiwan:

(tel) 0800 047 866
(fax) 0800 286 331

Other Asia Pacific

Countries:

(tel) (65) 6375 8100
(fax) (65) 6755 0042

Email: tm_ap@agilent.com

Contacts revised: 05/27/05

For more information on Agilent Technologies' products, applications or services, please contact your local Agilent office. The complete list is available at:

www.agilent.com/find/contactus

Product specifications and descriptions in this document subject to change without notice.

© Agilent Technologies, Inc. 2005 – 2002
Printed in USA, July 29, 2005
5988-7186EN



Agilent Email Updates

www.agilent.com/find/emailupdates

Get the latest information on the products and applications you select.



Agilent Technologies